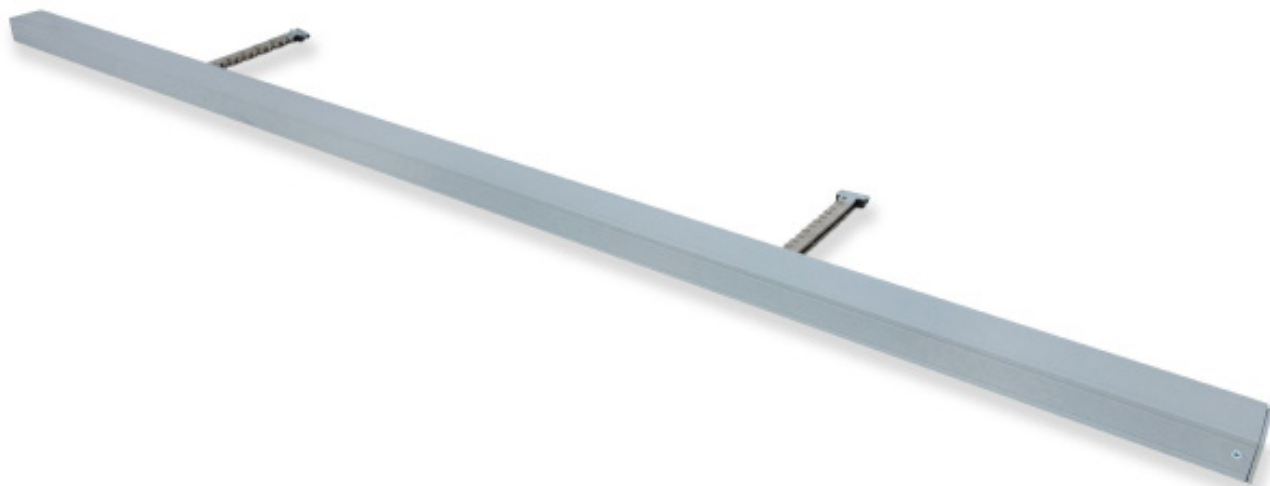


# Twin SECO N 24 25

Stroke 350mm

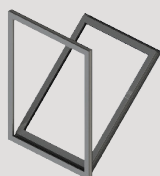


## Chain Actuator / 24V dc / 2 x 250N

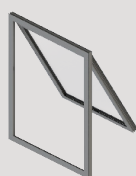
A unique twin chain actuator designed to offer improved window performance and aesthetics for automated solutions with the following features:

- Selectable compression point location and seal relief to optimise window weather performance in a single enclosure.
- Virtually silent operation with selectable speed control providing accurate position for environmental ventilation strategies.
- Slim compact design with standard or tailored finishes and flex lengths.
- Standard range of pre selected quarter point bodies plus tailored lengths upon request.
- Extensive range of bracketry to suit all window system applications.
- Extended warranty/life expectancy with operational frequency.

## Orientation



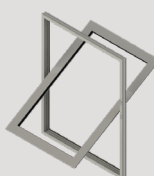
Bottom Hung



Top Hung



Side Hung

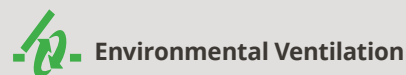


Centre Pivot

## Accreditations



## Applications



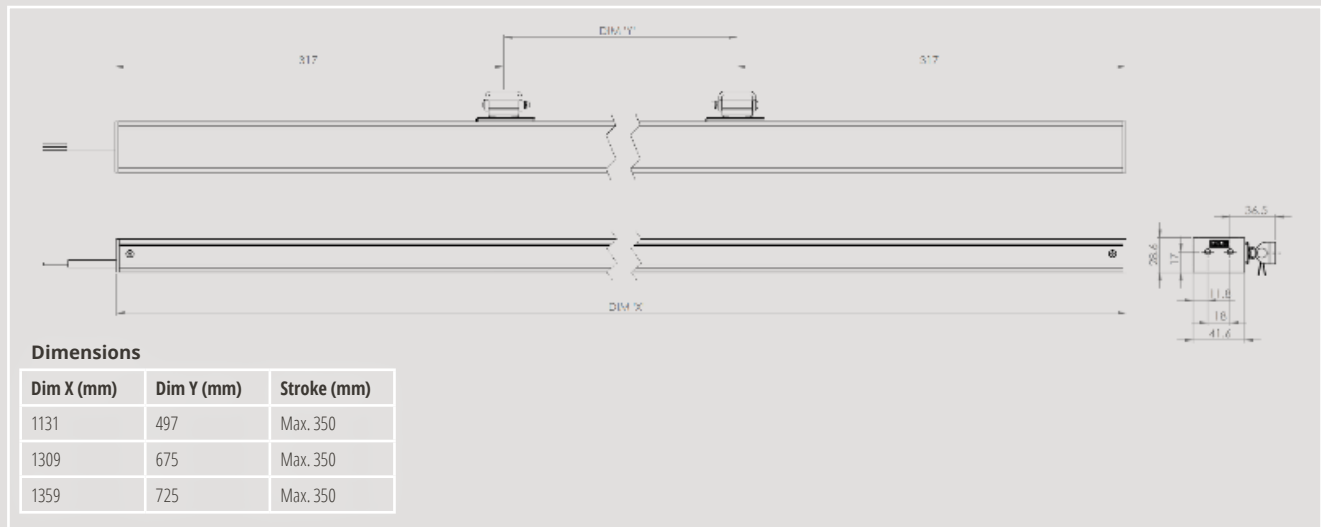
## Controllers

Controller	No. Actuators*
3 AMP Transformer	3
NVLogiQ PSU	4
SHEVTEC Controller	8
30 AMP PSU	30
OS2 AC Controller	N/A

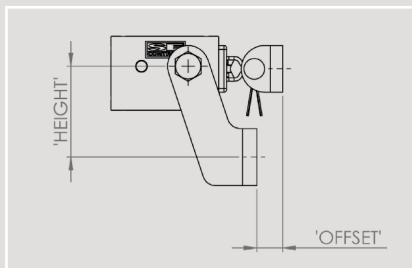
\*Recommended maximum no. of actuators

NB: 24V actuators require control from a compatible low voltage unit such as an OS2 SHEVTEC controller or NVLogiQ® PSU and permanent power should not be applied.

## Technical Drawing



## Standard Bracket Detail



## Bracket Product Codes

Offset (mm)	Height (mm)		
	35	40	50
0	AKS18000001	AKS18000002	AKS18000003
5	AKS18050001	AKS18050002	AKS18050003
8	AKS18080001	AKS18080002	AKS18080003
10	AKS18100001	AKS18100002	AKS18100003
15	AKS18150001	AKS18150002	AKS18150003
20	N/A	N/A	AKS18200003



**Please ensure the controls have a delay between switching if you are not using SE Controls products.**

## Technical Data

<b>Actuator</b>	Twin SECO N 24 25
<b>Actuator Type</b>	24V dc Chain Opener
<b>Voltage (all +/-5%)</b>	24V dc
<b>Amp Draw Current</b>	<1.0A
<b>Stroke</b>	350mm (configurable)
<b>Operating Speed</b>	min. 5mm/sec (configurable)
<b>Ambient Operating Temp</b>	-5°C to +60°C
<b>Thrust Force</b>	2 x 250N
<b>Close Force</b>	2 x 250N
<b>Soft Close</b>	Yes (via adjustable zero point setting)
<b>Switching</b>	Electronic
<b>Standard Finish</b>	Powder coated Grey (RAL 9006)
<b>Seal Relief</b>	Programmable up to 20mm
<b>Clamping Force</b>	2 x 4000N
<b>Colour Option</b>	Other RAL colours available on request
<b>Flex Length</b>	2m
<b>Flex Type</b>	2 core PVC 4 core (volt free contact)* as option
<b>Flex Colour</b>	Grey
<b>Product Warranty</b>	15,000 cycles
<b>Duty Cycle</b>	22% (approx. 2 mins on, 7 mins off)
<b>IP Rating</b>	IP20
<b>Bracket</b>	Sill fixing/ face fix/ thru body sill
<b>Synchronisation</b>	Optional
<b>Application</b>	Environmental Ventilation

## Product Codes

Silver Grey (RAL 9006)	Operating Voltage	Force	Stroke	Actuator Body Length	To Suit Vent Length
AAST250350S	24V	250N	350mm	1131mm	1150mm
AAST251350S	24V	250N	350mm	1309mm	1350mm
AAST252350S	24V	250N	350mm	1359mm	1450mm